

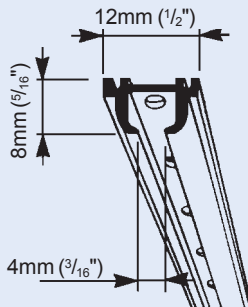
Hand Drawn Curtain Track System Silent Gliss® 1012



Hand Drawn Curtain Track System Silent Gliss® 1012

1012

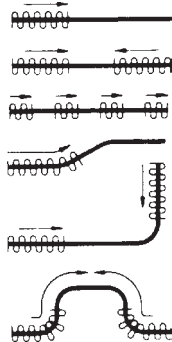
1:1



Product Information

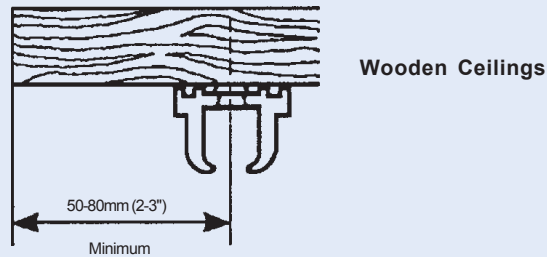
- #1012 is a light to medium duty hand drawn drapery track system
- Patented Silent Gliss technology eliminates friction from the gliders providing smooth and silent traversing of curtains
- Extremely small profile for an aesthetically pleasing look
- Curvable on both inside and outside radii, to a minimum radius of 100mm (4")
- Available in lengths to 6m (20') or may be bridged for longer requirements
- Standard clear anodized finish
- Particularly suitable for:
 - Sleeper Trucks
 - Windshield Closures
 - R.V.'s
 - Airplanes
 - Boats
- 5 Year limited Warranty

Bending & Stacking Possibilities

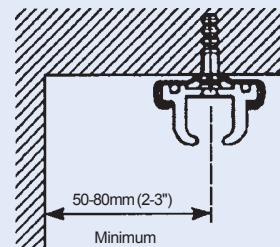


Min. radius R
1012 = 100mm (4")

Installation



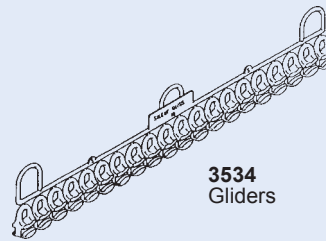
Plaster/Concrete Ceilings



Standard Components



3121
Delrin
Bracket
(Black or White)



3534
Gliders



3070
Eyelet
Endstop

Optional Components



3017
Endstop



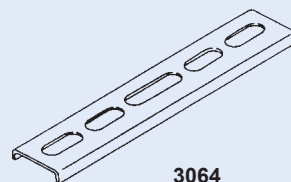
3032
Spring
Stop



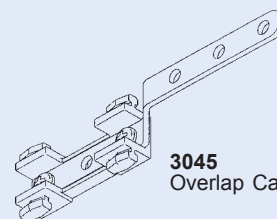
3570
Rotating
Glider



3700
Baton
100cm (36")
3750
120cm (48")



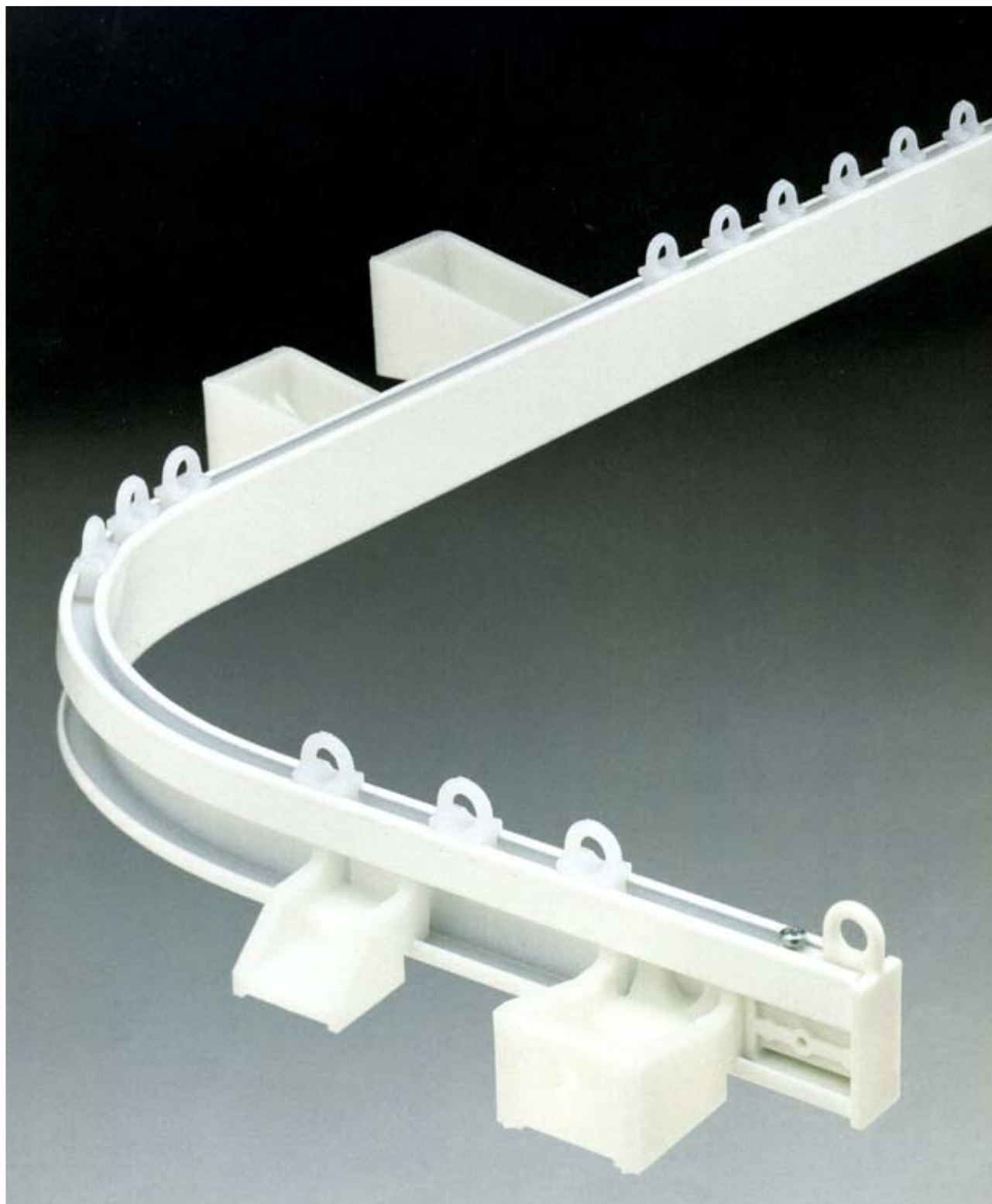
3064
Connecting
Bridge



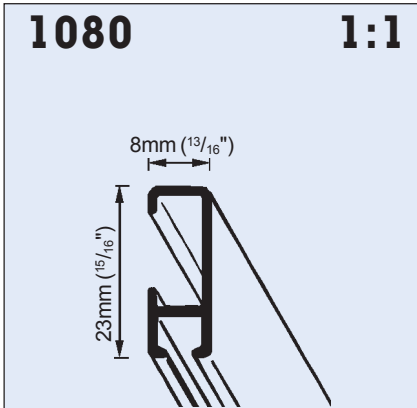
3045
Overlap
Carrier

© Copyright by Silent Gliss 2004

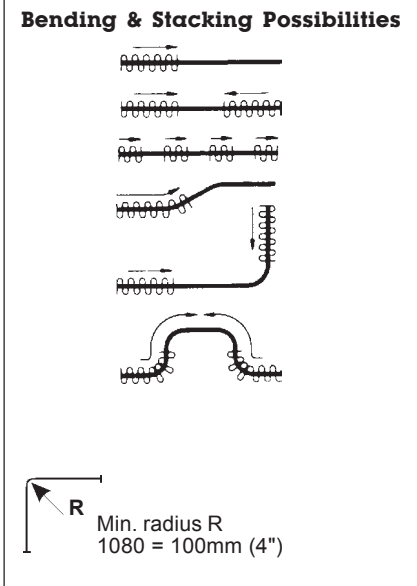
Hand Operated Curtain Track System Silent Gliss® 1080



Hand Operated Curtain Track System Silent Gliss® 1080



- Product Information**
- #1080 is a universally light to medium duty hand drawn drapery track
 - Elegant and robust, yet budget-minded
 - Available in standard clear anodized finish or optional white painted finish
 - Smooth, quiet and efficient operation on straight and curved applications
 - Curvable on both inside and outside radii, with min. radius of 100mm (4")
 - Allows easy returns
 - Perfect as ceiling mounted or suspended shower track
 - Particularly suitable for hotels, motels, offices, schools, homes, apartments, hospitals and nursing homes
 - 5 Year Limited Warranty



Installation

Ceiling Mount

Brackets may be pre-installed and system snapped onto brackets OR brackets may be attached onto tracks and entire system mounted to ceiling.

To remove system from brackets use a screw driver to release the track and remove in an upward motion (opposite to the mounting of the track)

Bracket #3603 to be spaced approx. 60-90cm (24"-36") o.c.

Wall Mount

Fasten #3630, or #3660 brackets onto wall, approx. 60cm (24") o.c., then snap track onto brackets.

Bracket	X
3630	33 mm (1 1/4")
3660	63 mm (2 1/2")

Use #0829-0831 Extension brackets with #3603 ceiling bracket for various projections from wall.

Bracket	X
0829	64- 89mm (2 1/2 - 3 1/2")
0831	95-114mm (3 3/4 - 4 1/2")

Suspended Ceiling Mount

Hanger with Suspension #3610

3611
3616
2144 Hanger Tube

80 mm (3 1/8")
min. 100 mm (4")

Fasten #3610 Suspension Hanger onto ceiling at max. 100cm (40") o.c.

Standard Components

Optional Components

© Copyright by Silent Gliss 2004

