

Roller Blind System Silent Gliss® 4800



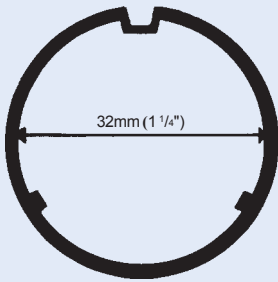
Home Collection
Exclusive

Roller Blind System

Silent Gliss® 4800

4227

1:1

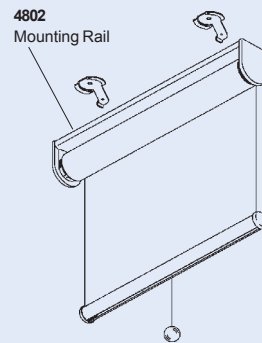


Product Information

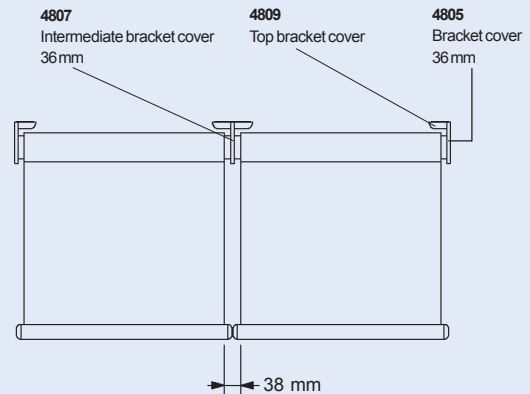
- A silent, maintenance-free and high quality spring-operated roller blind, ideal for residential and contract applications.
- Maximum width: 200cm (min. width:50cm)
Maximum drop: 300cm
Maximum surface: 6m²
Maximum load: 2kg
- The maximum dimensions of a roller blind system are defined by the maximum load (fabric weight including weight bar). The maximum width and drop indicated above cannot be exceeded.
- The speed controller, a unique patented accelerator mechanism, ensures the smooth and controlled ascent of the blind.
- Side-by-side fitting with a minimized light gap using a new intermediate bracket cover.
- System supplied standard with pull ball or optional pull grip.
- Aluminum bottom bar in clear anodized or white painted.
- Easy front loading and removal of the blind.
- Easy wall, ceiling or recessed mounting.
- Optional installation bar for faster on site installation using mounting clamps and benefiting from pre-mounted systems.
- Bracket covers for neater appearance outside recess.
- The optional built in stop controller allows the adjustment of the upper stop position. This feature is ideal for multiple shades in a room where aesthetics are important or where the blind may otherwise raise out of reach.
- Optional side guides for door and operable window applications.
- 5 Year Limited Warranty

Installation

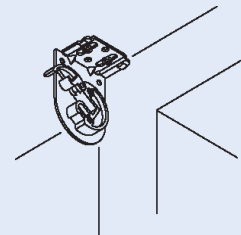
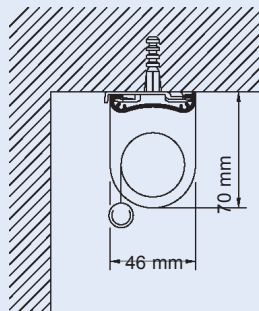
Optional Mounting Rail 4802
with clamps 3033/3044



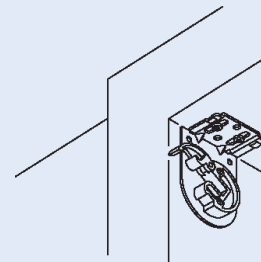
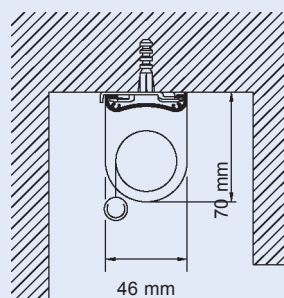
Side-by-side Mount



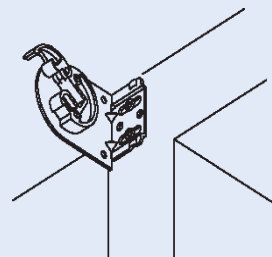
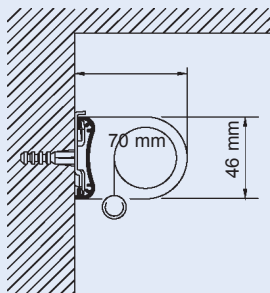
Ceiling Mount



Pocket/Inside Mount



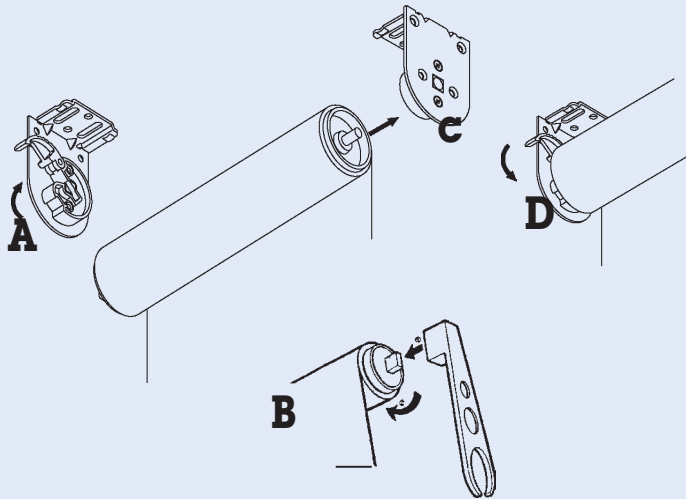
Wall Mount



© Copyright by Silent Gliss 2004

Roller Blind System Silent Gliss® 4800

Installation and Spring Adjustment



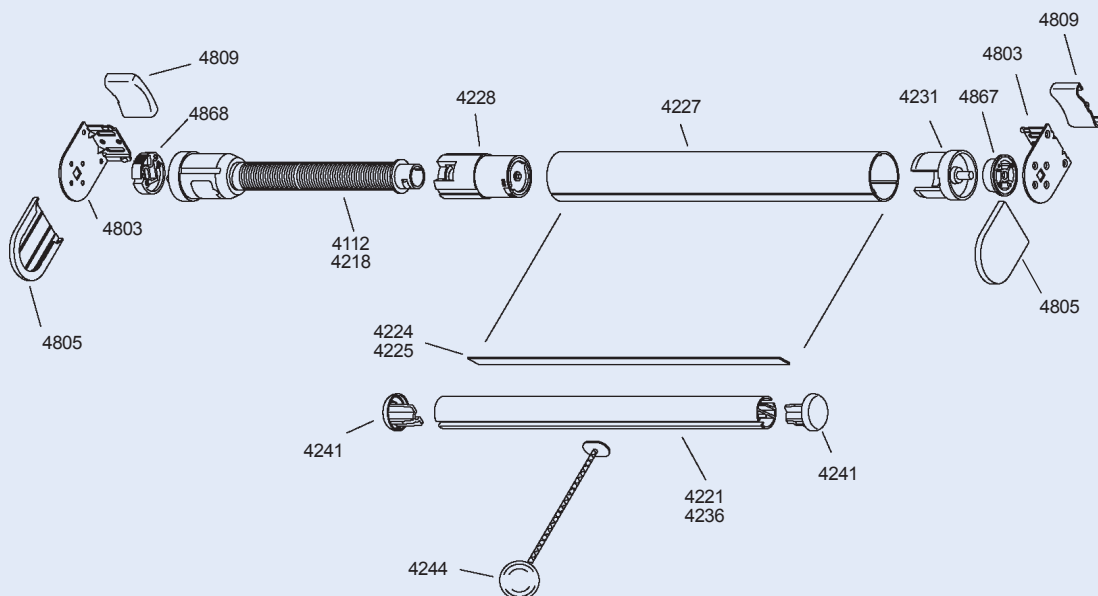
Pull down shade approx. 10-20 cm (4-8") making sure that shade locks into position (shade stays in this position and does not move up).

Open bracket up completely and carefully remove roller shade; make sure shade is not forced out as this can unlock spring, making it unravel.

Gently slide winder key over spring nozzle as shown (1), ensuring that spring does not become unlocked through a jerky movement. If for any reason spring becomes unraveled completely and no more tension is on it, start to wind up clockwise (2) until the number of turns indicated by the manufacturer is reached. If spring tension is still present but may be either too much (shade rises too fast) or too weak (shade does not roll up completely or too slowly), decrease tension by winding anti-clockwise a few turns or increase tension by winding clockwise a couple of turns. Insert shade into brackets (close bracket arm), try shade and repeat process if shade movement still not satisfactory.

Correct spring tension depends on width/height of shade and type of fabric used. Check with Silent Gliss for proper spring tension required.

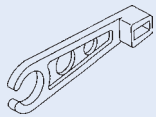
Explosion Drawing



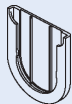
Roller Blind System

Silent Gliss® 4800

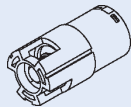
Standard Components



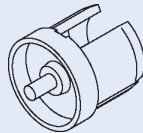
4211
Spring
Winder



4805
Bracket cover
36 mm



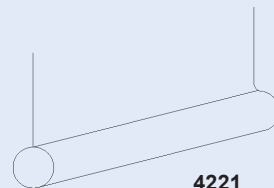
4228
Speed controller
right



4231
Idler
endcap



4244
Pull ball set



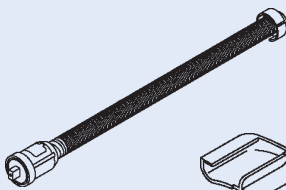
4221
External Weight
Bar (Standard)



4241
Weight bar
end cap



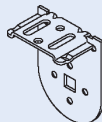
4221
Sewn in
Weight Bar
(Specify)



4212/13/14/15/16/17
Spring clutch set
(depending on
fabric weight)



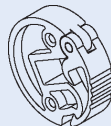
4809
Top bracket
cover



4803
Bracket
36 mm



4867
Support

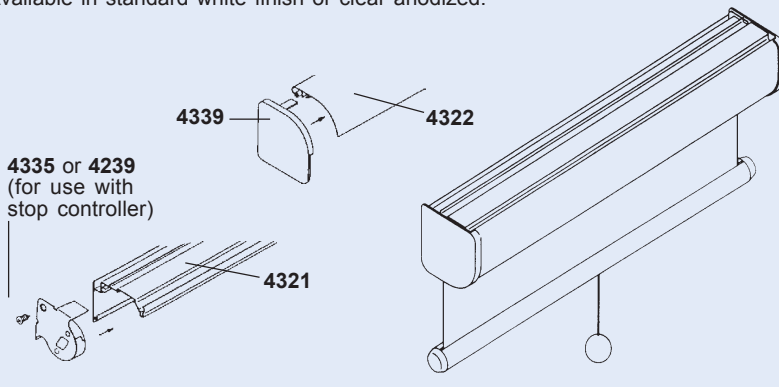


4868
Lock

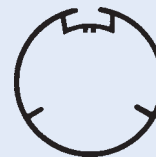
Optional Components

Design Valance 4240

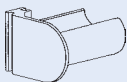
Available in standard white finish or clear anodized.



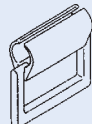
The standard max. width of 4800 is 200cm (80"). In order to extend the width of 4800 system, a stronger profile (4116) is used. Max. width 260cm (104").



4116
Profile
40mm (1 5/8")



4133
Side Guide



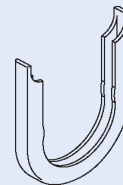
4247
Pull Grip
(white and clear)



3033
Clamp
(With Washer)

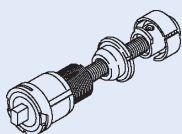


3044
Clamp
(No Washer)

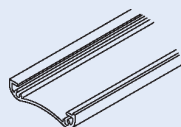


4807
Intermediate bracket
cover 36 mm

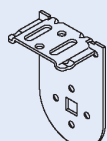
4808
Intermediate bracket
cover 46 mm



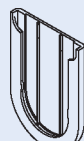
4377
Internal stop
controller



4802
Mounting
Rail



4804
Bracket
46 mm



4806
Bracket cover
46 mm



6028
Side Rail

© Copyright by Silent Gliss 2004