

# Roller Blind System Silent Gliss® 4860



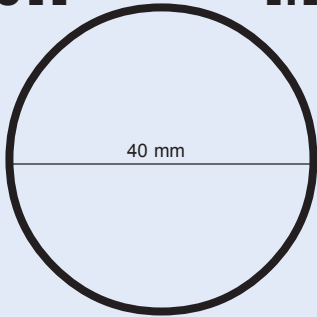
4860

# Roller Blind System

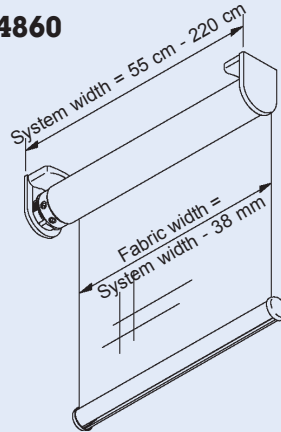
## Silent Gliss® 4860

4544

1:1



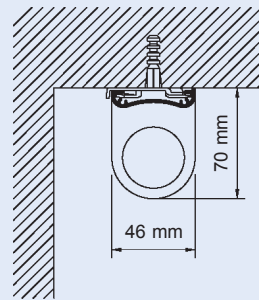
### Silent Gliss 4860



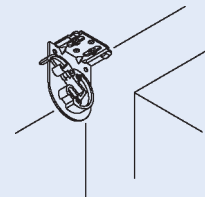
#### Product Information

- 4860 is a small 110 volt motorized roller blind system, ideal for residential and contract applications.
- Max. width: 220 cm (min. width 55 cm)  
Max. drop: 350 cm  
Max. surface: 7.5 m<sup>2</sup>  
Max. load: 7.5 kg
- The maximum dimensions of a roller blind system are defined by the maximum load (fabric weight including weight bar). Besides, the maximum width and drop indicated above cannot be exceeded.
- Two systems can be connected and operated simultaneously with one motor, benefiting from a minimized light gap.  
Max. surface: 12 m<sup>2</sup>  
Max. weight: 7.5 kg
- Motor: LD 110 V/100 W/0.90 A  
HD 110 V/135 W/1.20 A
- Wall switch or remote control operation.
- Aluminium bottom bar in clear anodized or painted white.
- Easy front loading and removal of the blind.
- Easy wall, ceiling or recess fixing.
- Optional installation bar for faster on site fitting using fixing clamps and benefiting from pre-mounted systems.
- Bracket covers for neater appearance outside recess.
- 5 Year Limited Warranty

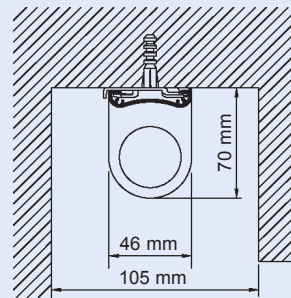
#### Ceiling fixing



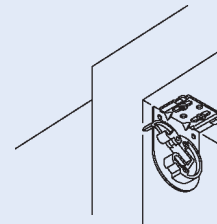
#### Bracket positioning ceiling



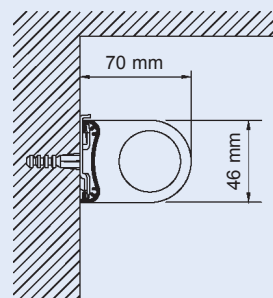
#### Recess fixing



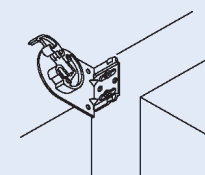
#### Bracket positioning recess



#### Wall fixing

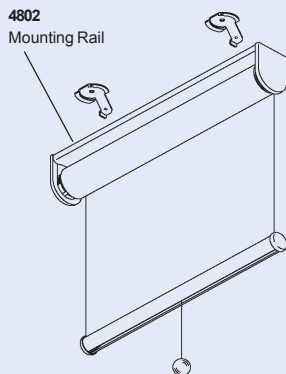


#### Bracket positioning wall

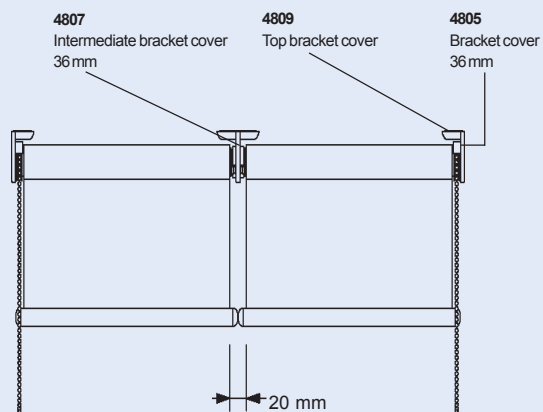


# Roller Blind System Silent Gliss® 4860

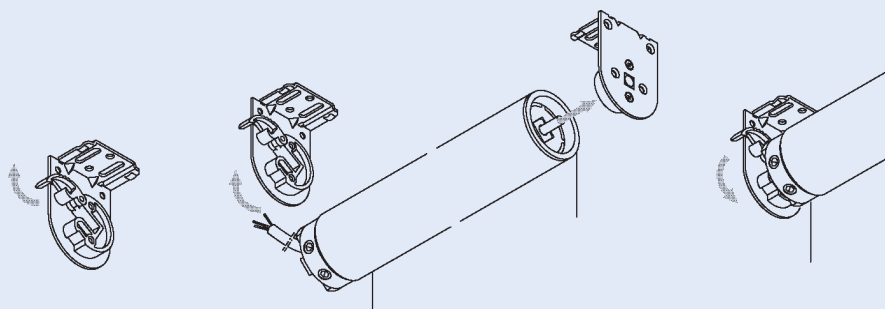
Optional Mounting Rail 4802  
with clamps 3033/3044



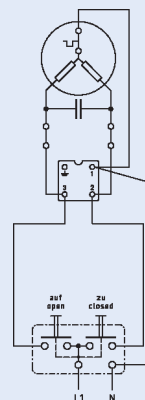
Side-by-side Mount



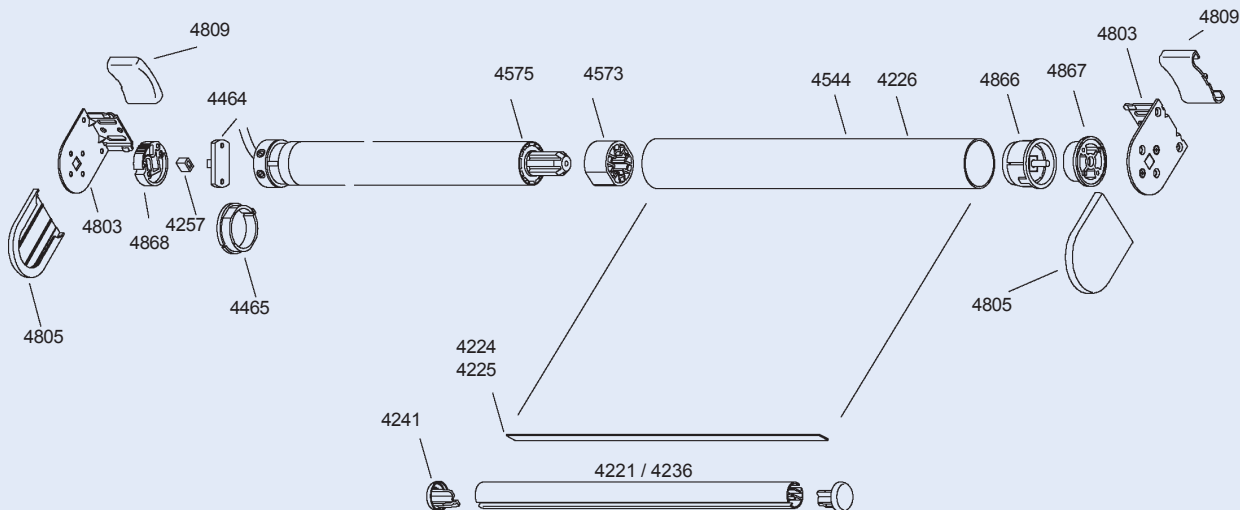
Easy front loading and removal of the blind



Wiring diagram



Exploded Drawing

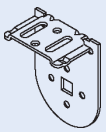


© Copyright by Silent Gliss 2004

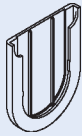
# Roller Blind System

## Silent Gliss® 4860

### Standard Accessories



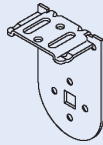
**4803**  
Bracket  
36 mm



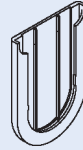
**4805**  
Bracket cover  
36 mm



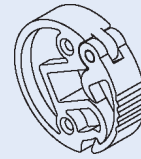
**4809**  
Top bracket cover



**4804**  
Bracket  
46 mm



**4806**  
Bracket cover  
46 mm



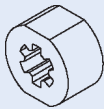
**4868**  
Lock



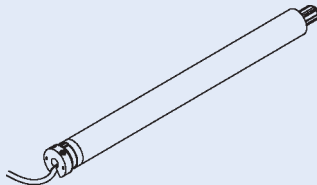
**4257**  
Sleeve



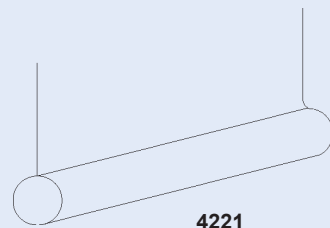
**4465**  
Adaptor



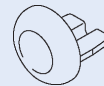
**4573**  
Master carrier



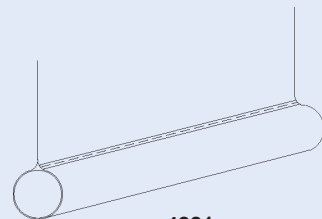
**4460**  
Motor



**4221**  
External Weight Bar (Standard)



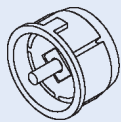
**4241**  
Weight bar end cap



**4221**  
Sewn in Weight Bar (Specify)



**4464**  
Adaptor

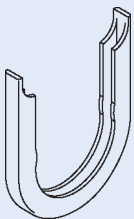


**4866**  
Idler endcap

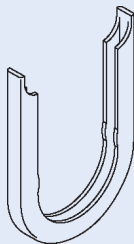


**4867**  
Support

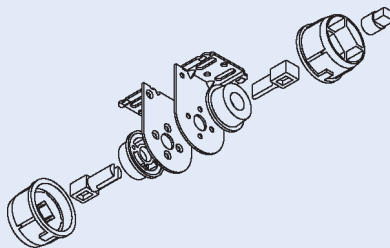
### Optional accessories



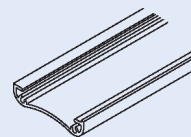
**4807**  
Intermediate bracket cover  
36 mm



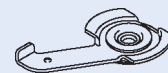
**4808**  
Intermediate bracket cover  
46 mm



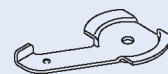
**4675 / 4876**  
Center support bracket set  
(36 mm and 46 mm)



**4802**  
Mounting Rail



**3033**  
Clamp  
(With Washer)



**3044**  
Clamp  
(No Washer)

© Copyright by Silent Gliss 2004